



Salish Sea Fellowship

COMMUNITY UPDATE



WWW.SALISHSEAFELLOWSHIP.ORG



>>> ABOUT US

The Salish Sea Fellowship is a center for liberal religion, providing an independent, educational, spiritual and liberal religious community of mutual support that embraces the traditional *seven principles* of Unitarian Universalism. This is our Community Update for our friends and members. If you have anything you would like to tell the community, please let us know at salishseafellowship@gmail.com.

HOW TO FIND US <<<

We meet in-person at the Community United Methodist Church (CUMC) in Port Hadlock, 130 Church Lane. Click [**HERE**](#) for our Zoom link for viewing our services, or go to Zoom and enter Meeting ID: 909 702 5487, Passcode: 338490.



UPCOMING EVENTS



STARTING ON 11/16, WE
WILL SHIFT TO OUR 2:00
START TIME FOR OUR
SUNDAY SERVICES FOR
THE WINTER MONTHS!

2



Sunday Service

November 16, 2 pm

CUMC, 130 Church Lane, Port Hadlock

Joseph Bednarik

Sermon: God as Metaphor

This Sunday our congregation of theists and atheists, mystics and mechanics explore the use of a powerful linguistic practice: The creation of metaphors. Sharing the words and ideas of revolutionary astronomers, leaping philosophers, and visionary poets, we will focus attention on the miracle of our existence and wonder aloud whether God is Love.

CHORAL BELLES HOLIDAY CONCERT & POTLUCK LUNCH

Join the **Choral Belles**, an all-female chorale, performing in Port Townsend and surrounding communities for 30 YEARS, for a holiday concert and potluck lunch!

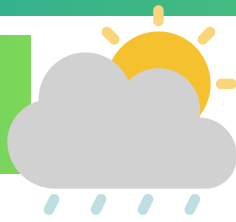
Thursday, December 4th, 10:30 AM at CUMC, 130 Church Lane, Port Hadlock

Please plan to join us and confirm your attendance with Joyce Francis at:

joyce.francis.pt@gmail.com or 301-512-6815 **by Nov. 18.** Our community is blessed by a such a wealth of musical talent!



UPCOMING EVENTS



STARTING ON 11/16, WE
WILL SHIFT TO OUR 2:00
START TIME FOR OUR
SUNDAY SERVICES FOR
THE WINTER MONTHS!

3



Sunday Service
December 7, 2 pm
CUMC, 130 Church Lane, Port Hadlock

Joseph Bednarik

The Salish Sea Fellowship is delighted to welcome back Joseph Bednarik to speak to our community! Joseph always offers such beautiful and poignant insights that linger long after his sermons are over.



COMMUNITY POTLUCK

SUNDAY, DECEMBER 14, 5 PM, CUMC

Doors open at 4:30 to allow for more socializing.

**As always, bring your own beverages
and table settings,
as well as a dish to share.**

GAMES & SNACKS WITH FRIENDS



Games & Snacks with Friends will be put on hold through November and December, but will return in January. Keep your gaming skills sharp by playing with your friends and family this holiday season!

ALPs (Adult Learning Programs)

NEWS

4

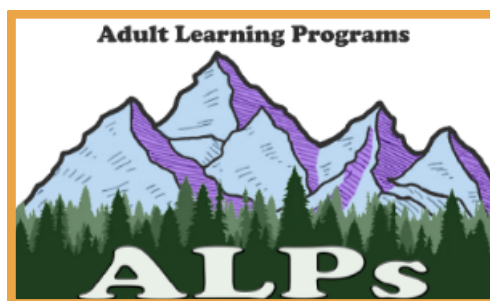
It's that wonderful time of year again, our beloved ALPs program is underway!

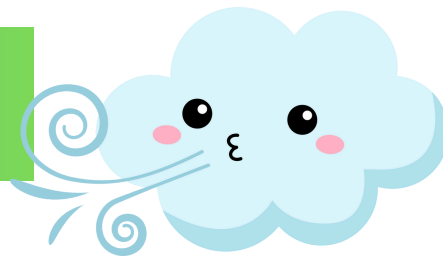
Fall ALPs programming runs from Sept. 19 through the end of the year. A flyer of ALPs offerings, as well as a link to sign up, are available on our Salish Sea Fellowship website [**HERE**](#).

ALPs Spring Term NEWS!

Calling all folks interested in volunteering to present a Salish Sea Fellowship Adult Learning Program (ALPs) class, event, or field trip. Details, and a proposal submission form, are available below:

- ALPs activities are open to all without cost (except for possible class books/materials or transportation/admission fees for field trips) and free of commercial content. Presenters are volunteers.
- The Spring ALPs Term 2026 will run Feb. 1 through May.
- ALPs classes and events occur at Community United Methodist Church in Port Hadlock (or in local venues by special arrangement).
- **Please complete and submit the form [**HERE**](#) by December 15.**





Follow up to Our Annual Meeting:

Our annual meeting was held this past Sunday, Nov. 9, and was attended by nearly 40 members, or their proxies. Thank you for your active participation. Together we make our fellowship thrive! The members passed a budget for 2026 of \$73,100.

Click [HERE](#) to access a **2026 Pledge Form** to continue your contribution to the expansion of our dear Fellowship. Please return your pledge to our Treasurer, Judy King: 260 McMinn Rd. Port Townsend, 98368, email: judith.king2@icloud.com. We appreciate your support as we look forward to another year of community and connection! Finally, Member Megan Cate stepped up during the meeting to run for the one open seat on the Board of Directors, and was duly elected. Thanks, Megan! Our seven-member board is now: Megan Cate, Gary Nelson, Judy King, Ron Strange, Brian Rogers, Rob Wamstad and Nils Pedersen.

What Do You Believe?

We are a community of free faith, each with our own carefully curated ideas and beliefs. On our new website, we include a section entitled Who Are We, and under that is tab entitled Our Religion-What do We Believe? In addition to a broad statement about our free faith and our Fellowship, we would love to include individual statements of personal belief, ideally a 3 or 4 minute video of you expressing your credo statement, your set of personal beliefs, whether those are Christian, Buddhist, Atheist, Humanist, or defying all labels (like many of us!). So, if you would be comfortable expressing your personal belief statement to the world to help show who we are, please contact Doug Rodgers, who will coordinate this effort for us. We hope to post five or six videos, and if we get more than that, we can rotate the ones we have up on the web. Doug can be reached at douglas.rodgers@sbcglobal.net.

View Doug Rodger's "What Do We Believe?" video [HERE!](#) (Wonderful job, Doug!)

MEMBERSHIP



Membership Status: Consider Becoming a Member this Winter!

Our community is growing and expanding thanks to our members. We'd love to have you join us, too! You too may become a member of the Salish Sea Fellowship by filling out the application form ([HERE](#)), and then being approved by the Board. All membership applications we have received have been approved by the Board. All are welcome! Make community a priority in 2026.

LIGHTHOUSE GROUPS

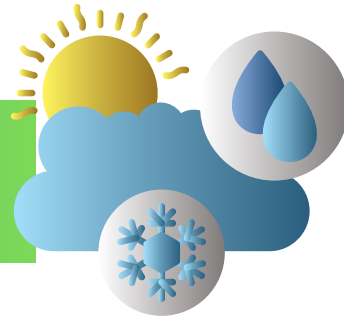


6

Many of us seek deeper spiritual and personal connection, as well as the opportunity to talk meaningfully and openly about our hopes, fears and beliefs. As such, we hope to start one or more Lighthouse Groups (also previously known as Covenant Groups) to allow our members and friends the opportunity for this deeper connection. Typically, these types of groups meet several times a month, either at a member's home or at the Fellowship, and the meeting involves both personal check-ins and topical discussion. Ten of our Salish Sea members have been part of the same group for years, and it has become a meaningful and important part of their lives. As such, the members of this group hope to start new groups in our Fellowship to allow others this deeper connection. We only need 3-4 additional folks to get this group up and running!

Reach out to Virginia Nixon at nixonvirginia@gmail.com with input or questions.

CARING AND CONCERNS TEAM



Breakfast Club: Breakfast Club continues during the winter months! As the seasons change, get together for good friends and lively conversation. Sarah, Karen, and others hang out on Wednesdays at **9:30 AM** at the **Bay View Restaurant**. Join together for coffee, tea, breakfast, or even pie. You could also add ice cream (it's in the dairy group)!

Carpooling to Events: If you are interested in carpooling to events, please send an email to salishseafellowship@gmail.com. Tell us your preferred pickup location and phone number, and we will figure out a plan. We belong to each other.

Friend of the Fellowship, Sheila Harwood, is in the life care facility in Port Townsend, Room #111. Sheila loves receiving both cards and visitors! Sending Sheila our very best this holiday season.

Member, Anne Virtue, has graciously offered to host Thanksgiving for anyone wanting a friendly place to eat and be merry! Please contact Anne (annevirtue@yahoo.com) today to reserve a spot. Thank you so much, Anne. Community is such a blessing!

COMMUNITY OFFERING

Learn more about
Jumping Mouse
[HERE](#)

7

Our Sunday Service offering is now taken in support of organizations doing important work in our community. If you know of deserving groups doing good work in our community, please send us your suggestions for such organizations by email to salishseafellowship@gmail.com. Please make sure that these groups are local non-profit organizations with 501(c)(3) status. For the offering, if you want to put money in the collection plate for any reason other than the Community Offering being supported on a particular Sunday (e.g. your pledge) you can do so by: 1. writing a check including instructions on where the money should go, or 2. If you want to give cash, placing it in one of the provided envelopes and write your name and instructions on the envelope. This allows us to credit you in our records.

Community Offering for November: Jumping Mouse Children's Center



Healthy children, healthy families, and healthy community for all.



A big shout-out to member, **Barbara McCaughin**, for her dedication to coordinating our Community Offerings at the Salish Sea Fellowship!
Team work makes the dream work!



Thank you, Members & Friends! Through your generosity, Salish Sea Fellowship has donated nearly \$5,000 to local nonprofits, including: Jefferson County Immigrants Rights Advocates, Jefferson County Food Bank Association, National Alliance on Mental Health (NAMI), Chimacum Commons Project, Habitat for Humanity, Dove House, Sunfield Land for Learning, Center Valley Animal Rescue, Bayside Housing and Food Bank Growers. We continue to be so humbled by the kindness of our community.

UU JOKE OF THE WEEK

HAHA!



8

The Unitarian Universalist was out in his boat fishing when suddenly the Loch Ness Monster rose up out of the lake and attacked his boat. The Loch Ness Monster grabbed the bow of the boat in its huge mouth, flipped the Unitarian Universalist way up into the air, and opened its mouth wide, prepared to catch the guy in its mouth and eat him.

As the Unitarian Universalist fell towards that huge mouth filled with sharp teeth, without thinking he said, "Oh my God, help me!" Suddenly time froze. As the guy hung there in mid-air, a huge voice boomed out, "I thought you didn't believe in a personal God on whom you could call in times of crisis!"

"Hey, give me a break, God," said the Unitarian Universalist. "A minute ago I didn't believe in the Loch Ness Monster, either."

SUPPORTING OUR NEIGHBORS



Supporters of The General Store At The Methodist Church in Port Hadlock!

We are reaching out for your help once again because "the times, they are getting hard." Food Banks are losing significant governmental funding. We have seen our shopper numbers rising Saturday after Saturday. The General Store is the only store in the Tri-Area giving out totally free food, clothing, shoes, and more! This is where you come in. The General Store at CUMC is collecting a specific list of items that are in high demand in our community. Please see the listed items that are needed **HERE**. **The CUMC General Store asks that we only donate the items that they've requested, as that they have very limited storage space.** Donations can be delivered between 10:00 am and 12:30 pm Saturday mornings ONLY to:

Methodist Church General Store, 130 Church Lane, Port Hadlock

Our Salish Sea Fellowship Community appreciates and supports all the work that the CUMC does to tend to our neighbors in need.

Support Bayside Housing's Fundraiser for the Jefferson County Food Bank, Soup's on for Hunger! Date: November 23rd from 3-6 Where: Old Alcohol Plant, Port Hadlock. See the flyer **HERE** for additional information.

ARCHIVE OF SUNDAY SERVICES

If you miss a Sunday Service, don't forget that we have a **Salish Sea Fellowship YouTube Channel** with a full archive of all of our Sunday Services! Access our YouTube Channel **[HERE](#)**, or go through our webpage **[HERE](#)**. Enjoy a past service in the comfort of your own home with a warm cup of coffee!



HELPING OUR NEIGHBORS

Let's support the CUMC General Store during these cold winter months by donating warm scarves, gloves, socks, and sleeping bags to those in our community! Donations can be delivered between 10:00 am and 12:30 pm Saturday mornings ONLY to:

**Methodist Church General Store, 130 Church Lane,
Port Hadlock**



Attention, Home Chefs!

CUMC also runs a weekly soup kitchen, and Salish Sea provides the soup (a gallon of veggie and a gallon with meat) on the third Saturday of the month. If you would like to join the list of folks who provide soup and/or assist with set-up and clean-up in the future, please contact Kate Madson at kmadson3of9@gmail.com or Kendra Golden at kendrajgolden@gmail.com. Thank you so much to Kate and Kendra for their dedication to feeding our neighbors. We belong to each other.