

Salish Sea Fellowship Community Update



Edition #45

June 2, 2026

WWW.SALISHSEAFELLOWSHIP.ORG

>>> ABOUT US

The Salish Sea Fellowship is a center for liberal religion, providing an independent, educational, spiritual and liberal religious community of mutual support that embraces the traditional *seven principles* of Unitarian Universalism. This is our Community Update for our friends and members. If you have anything you would like to tell the community, please let us know at salishseafellowship@gmail.com.

HOW TO FIND US <<<

We meet in-person at the Community United Methodist Church (CUMC) in Port Hadlock, 130 Church Lane. Click [HERE](#) for our Zoom link for viewing our services, or go to Zoom and enter Meeting ID: 909 702 5487, Passcode: 338490.

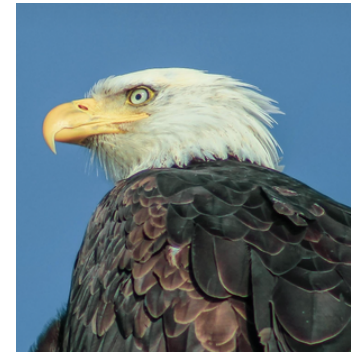


**ALL ARE
WELCOME**



**JOIN US IN
COMMUNITY**

SUNDAY SERVICE



Sunday Service

June 7, 4 pm

CUMC, 130 Church Lane, Port Hadlock

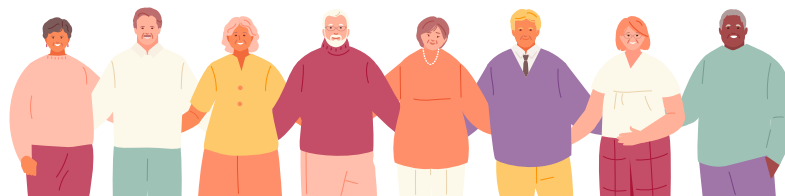
Joseph Bednarik:

A = C: The Transitive Power of Wisdom Statements

For centuries, math teachers the world over have written the following on chalkboards: If $A = B$ and $B = C$, then $A = C$. Does the same hold true with wisdom teachings from various religious traditions? Are there any equals signs between the teachings of Jesus and Buddha and Lao Tzu? And what, exactly, is an equal sign?

Animal photos from around the PT area taken by Sam H. Black Photography.

SOLOS GROUP



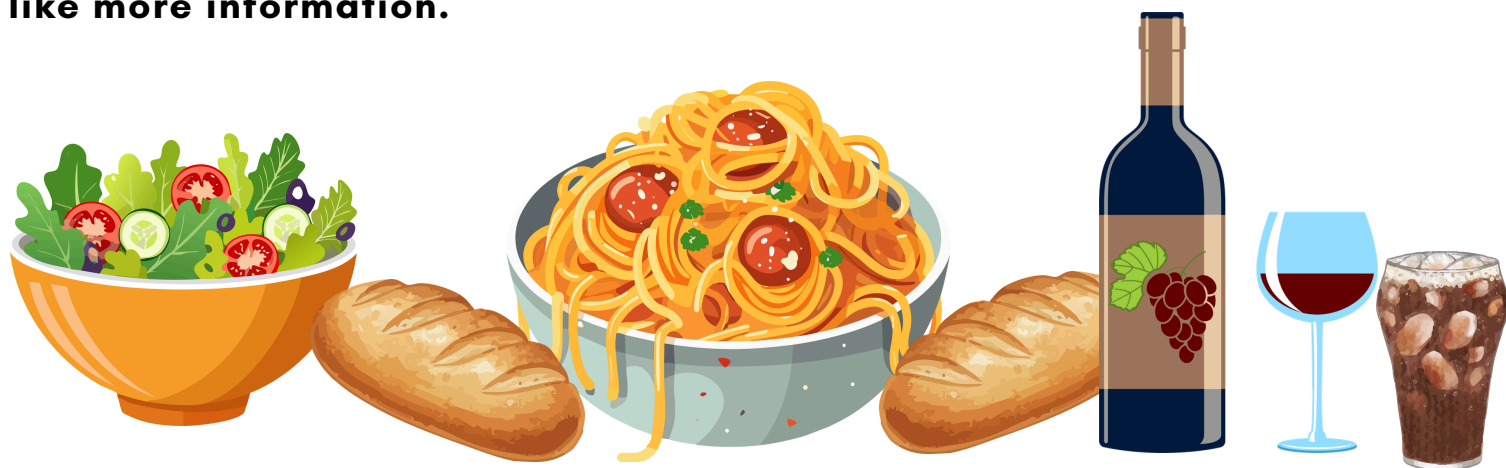
Get together and introductory meeting at Anne Virtue's Port Townsend home, Friday, 12 June at 5:30.

There will be a spaghetti dinner, salad, bread, wine, beer, and soft drinks—no need to bring anything.

A new group for unmarried, divorced, and widowed SSF members. We can discuss the issues we have living alone, become better friends, and potentially turn to each other for aid and companionship. I'm imagining occasional dinners together, sharing a favorite TV show, going to a movie, taking walks, and most importantly, calling on each other in an emergency, or for transportation to a special doctor's appointment.

The group will be what we make it.

Contact Anne at annevirtue@yahoo.com to RSVP, and for directions and her phone number. Anne will be at the Sunday, June 7 service, if you'd like more information.



COMMUNITY POTLUCK



Date: Sunday, June 14

Time: 4:00pm - 6:00pm

Location: CUMC, 130 Church Lane, Port Hadlock

Doors open at 4:30 to allow for more socializing. As always, bring your own beverages & table settings, as well as a dish to share.

Our June potluck comes as we celebrate our second anniversary as a Fellowship. We will have a brief presentation and discussion (after we eat!) about the state of our congregation, what's coming up this summer and fall, and what we all want for our little group. Please come and take the opportunity to provide some direct feedback about how we are doing and what you'd like to see happen.

FRIENDSHIP SUPPERS



Friendship Suppers are informal, intimate potluck gatherings held in members' homes, or even at the Fellowship (CUMC). It's a simple idea for our 4th Sundays, and we hope a good way to build community and deepen connections through shared meals and conversation. It's not a new idea; at various UU congregations they have been called Circle Suppers, Dinner for Eight, or Small Group Dinners. The basic idea is that a host announces a day and time, and members sign up; the host coordinates the contributions.

**We are going to have our next two
Friendship Suppers on June 28!**

**Judy King & Ron Strange/Kate Madson
will be our gracious hosts.**

**All info is available at the SignUpGenius [HERE](#).
Don't delay in signing up, as spaces are limited!**

SIGN UP!

UPCOMING SUNDAY SERVICE

6

Doug Benecke

June 21, 4 pm

**CUMC, 130 Church Lane,
Port Hadlock**



Faith, Hope, and Charity:

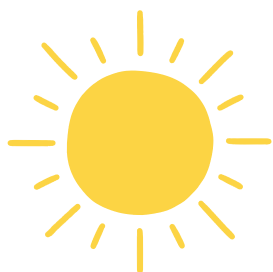
“If you haven't got any charity in your heart, you have the worst kind of heart trouble” - said that famed spiritual sage . . . Bob Hope! For summer solstice at Salish Sea Fellowship, a story about charity, and the power of love in our hearts, in our lives, in our world - and beyond! A talk with music by Doug Benecke.



SUMMER ACTIVITY DATES

We will be modifying our schedule for the summer months, and will resume our regular programming in September. More information will be forthcoming, but please add these dates to your calendar!

July 12: Community Event
July 26: Poetry Sunday Service
August 9: Community Event
August 23: Sunday Service



POETRY SUNDAY

Sunday, July 26

We are looking for participants in the upcoming "**SSF Favorite Poet Service**" on **Sunday, July 26**. Some of you may be familiar with Joseph Bednarik's format; or remember our service from last summer.

So what's it all about? The "**Favorite Poem**" service is a "regular" service except that poetry readings at intervals replace the sermon.

There are two main ingredients:

1) Personal stories -- the more personal the better

The service should be called "Tell Us A Deep Personal Story About Your Relationship with a Poem." Yes, we are highlighting/honoring a poem, but more importantly we are honoring/celebrating a relationship between a reader and a poem and deepening the congregation's relationship with the reader.

2) The Congregation: Active Listeners

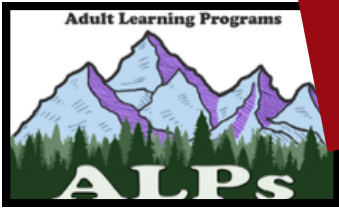
The congregation has a major role as an active participant through the quality of their listening and silent applause response; not just a passive receiver.

Joseph's two strict rules:

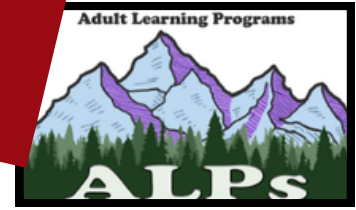
1) Four minutes maximum for a person's entire presentation, poem and personal story. This is basic time management and fairness.

2) Readers are not allowed to present a poem of a partner or close family member (unless they are published), or their own poem. Period.

If interested, please submit your name, contact information, and the name of your poem/author to Rob Wamstad at wamstad.pt@gmail.com. It is anticipated that there will be time for 8 or 9 readings. **New presenters will have priority!**



ALPS NEWS



**A note from your ALPs Coordinator, Joyce Francis:
Our ALPs program continues to grow!**

This is how we've done since we started:

Summer '24 - 11 programs, 49 enrollments
Fal '24 - 14 programs, (unclear)
Spring '25 - 17 programs, 121 enrollments
Fall '25 - 16 programs, 145 enrollments
Spring '26 - 21 programs, 209 enrollments

We're all so excited to see what new offerings will be available in Fall '26!
 Keep your eyes posted for upcoming details. **What a gift this program is for our fellowship and our larger community.**

BENEVOLENCE FUND



Our Fellowship has a 'benevolence fund' for the benefit of individuals and families that find themselves in financial difficulties. Its purpose is to meet basic, temporary needs such as food, shelter, clothing, utilities, medical care, etc. This fund is for anyone in need, whether SSF members, friends or the general public of East Jefferson County. If you or someone you know is in such need, please contact Karen Wamstad, our Caring and Concerns Coordinator, at kjmwamstad@gmail.com.

“Stillness” Gatherings



Weekly “Stillness” gatherings with Tai Sheridan

Tai’s teaching is based on two practices: anchoring in silence and aligning with gravity. Together, they are ways of becoming grounded, present, intimate with reality, and fully yourself. Join this free zoom community for one hour each Tuesday at 5 pm to share meditation and contemplation.

For the zoom link, go to taisheridan.com then click on “Meetings”

MEMBERSHIP



Please welcome Mary Grace Swift of Port Townsend to our membership!

Just as a reminder, here is our commitment to one another when we join:

We have each separately chosen to be part of an independent community of free faith. We have organized not only as a religious and charitable institution, but one offering spiritual, growth oriented and community-building education.

We hope to be a center for liberal religion, growing out of unitarian and universalist traditions while embracing the seven principles of unitarian universalism adopted in 1985.

As such, our objectives include the promotion of freedom of faith and the creation of a forum in which reason will guide religious thought and expression.

In the pursuit of this, we will strive for an atmosphere of fellowship and a community of mutual support.

We believe that if we hold each other in community and without judgement, with care and respect and kindness, there should be no issue of our time that we can not take on.

You may become a member of the Salish Sea Fellowship by simply filling out the application form [HERE](#), and being approved by the Board. All membership applications have been approved. **All are welcome!**

Sunday Service Over Zoom



Can't Join us in-person for a Sunday Service, join by Zoom!

Gail Sandlin has been working diligently to increase our Zoom experience; making sure that our Zoom friends are feeling included and involved. Gail has even been hosting conversations after the service, giving everyone the opportunity to debrief and discuss the sermon. Join us some Sunday over Zoom in your favorite cozy clothes and a hot cup of coffee!

You may access our Zoom link [**HERE**](#).

RECYCLING AT CUMC



Since the county no longer provides free recycling bins, we ask fellowship members with curbside recycling to take the church's recyclables home for disposal. Kindly inspect the storeroom adjacent to the kitchen, as well as the clearly marked recycling bins located in both the sanctuary and office. This will help us avoid the cost of our own curbside service.

CARING AND CONCERNS TEAM



Breakfast Club: Breakfast Club continues into the summer months!

Get together for good friends and lively conversation. Sarah, Karen, and others hang out on Wednesdays at 9:30 at the Bayview. **Join us, friends!**

Judy McCutchen: Our dear friend, Judy McCutchen, has moved to Bellingham to be closer to family. We know Judy will miss her friends at the Salish Sea Fellowship, and we will miss her tremendously. Send Judy a note letting her know she is in our hearts. Her address is: 4415 Columbine St. #306 Bellingham, 98226. Her landline is: 360-671-5965. **Let's flood Judy's mailbox with LOVE!**

COMMUNITY OFFERING

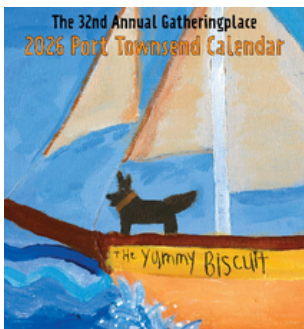
Learn more about
Gathering Place
HERE!

11

Our Sunday Service offering is now taken in support of organizations doing important work in our community. If you know of deserving groups doing good work in our community, please send us your suggestions for such organizations by email to salishseafellowship@gmail.com. Please make sure that these groups are local non-profit organizations with 501(c)(3) status.

Community Offering for June:

Gathering Place



Gatheringplace is a long-standing Port Townsend nonprofit organization dedicated to empowering adults with intellectual and developmental disabilities. It offers enrichment programs and job training to help participants build life skills, confidence, and community integration.

Thank you, Members & Friends! Through your generosity, Salish Sea Fellowship has donated nearly \$10,000 to local nonprofits. Check out the front page of our website for the entire list of incredible nonprofits that helps sustain our community.

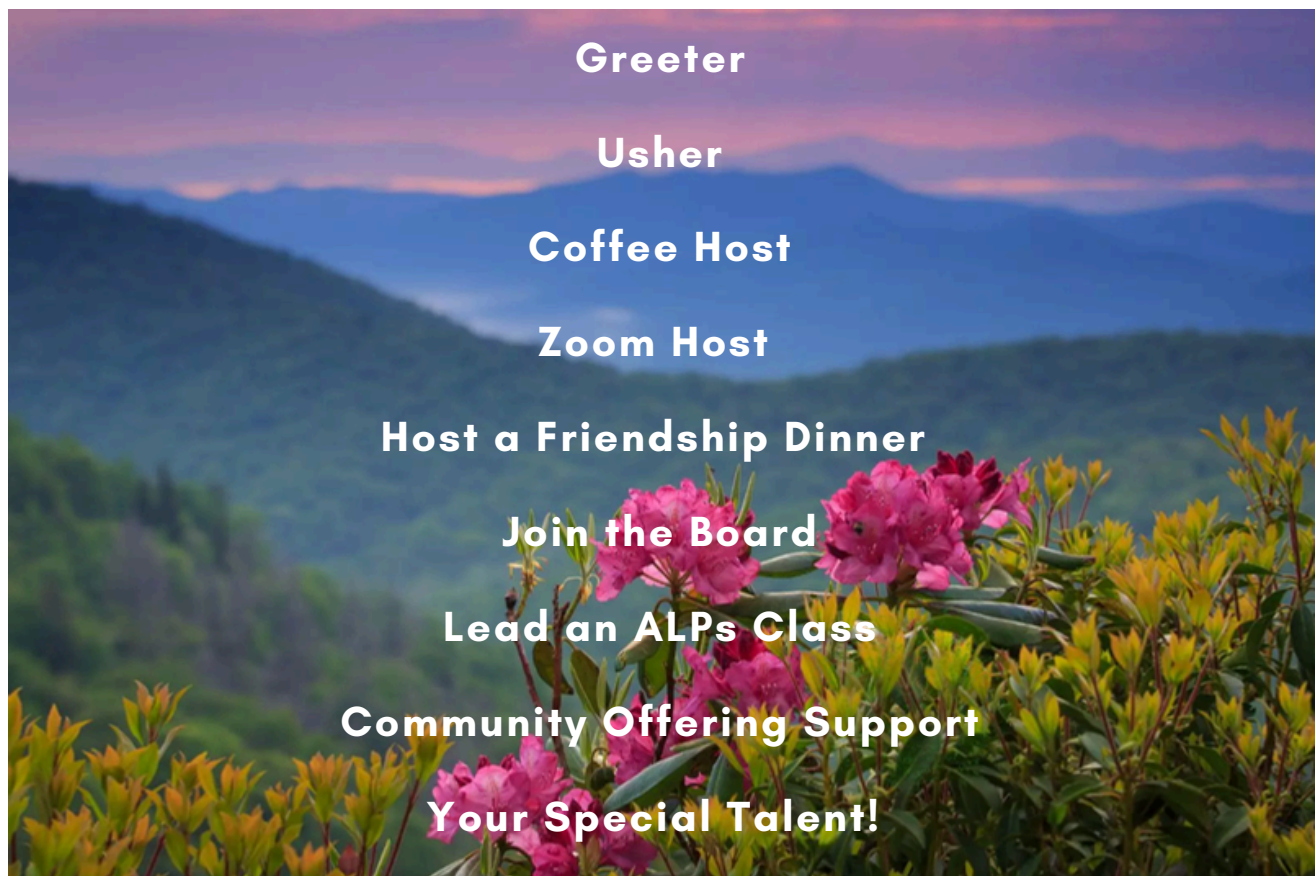
GROW TOGETHER: GET INVOLVED

12

This summer our little Fellowship turns 2!

We're so thankful to all of our members and friends who have been along with us on this journey. Having a welcoming, supportive place to gather together is such a gift. We all need a soft place to land, especially during these challenging times.

Getting involved in the Salish Sea Fellowship is both easy and rewarding, and there's a role for everyone! Please consider volunteering for one of these support opportunities. Thank you so much. We belong to each other!



Email [**salishseafellowship@gmail.com**](mailto:salishseafellowship@gmail.com) to get involved today!

ASSISTIVE LISTENING AVAILABLE



13

We are happy to announce that we have installed an Auracast™ transmitter at the CUMC to support our friends and members with hearing challenges. Those with the latest hearing aids can now receive clear sound broadcasts. We've also procured miniature receivers and neck loops so that those wearing T-coil equipped hearing aids can enjoy Auracast™ broadcasts, as well. Finally, we've purchased headphones equipped with an Auracast™ receiver so those without hearing aids can also enhance their hearing and understanding. Learn more about how Auracast™ may enhance your listening experience at the Salish Sea Fellowship [HERE](#).

Hearing Assistance

We now have Auracast hearing assistance operational in the Sanctuary and on the roll-around HDTV

If you have Auracast compatible hearing aids, then use your smartphone app to select Auracast Broadcast and then choose

Auracast - Sanctuary

Or

Auracast - HDTV.

We also have six Auracast receivers that can presently be used in the Sanctuary for those with hearing aids that can receive Telecoil audio. Choose one of the Neckloops in the left drawer next to the AV screen. Then plug it into a receiver and set your hearing aids to Telecoil.

If you could benefit from hearing assurance but don't have compatible hearing aids, we also have individual earbuds that also lug into a receiver. The earbuds are free for you to use. After use, take the home and use them again for as many times as they survive. Then take a new set.

Auracast Compatible Hearing Aids:

(All require a smartphone app)

Beltone: [Commence](#), [Envision](#), [Serene](#)

Bernafon: [Encanta](#) (APP version \geq 1.6.1).

Cochlear: [Baha 7 Sound Processor](#)

GN: Danalogic Extend

Jabra: Enhance Pro 20, Enhance Pro 30, Enhance Select 500, Enhance Select 700

Nuear: Noble AI 24

Oticon: Intent (firmware \geq 1.3.0 & with latest Companion app) , Zeal

Philips: Hearlink 9050 (firmware \geq 1.3.0)

Resound: Enzo IA, [Nexia](#), [Savi](#), [Vivia](#)

Starkey: Edge AI, Omega AI

Widex: Allure (firmware \geq 5.1.20)





HAPPY Pride MONTH



**ARCHIVE
OF
SUNDAY
SERVICES**

If you miss a Sunday Service, don't forget that we have a **Salish Sea Fellowship YouTube Channel** with a full archive of all of our Sunday Services! Access our YouTube Channel [HERE](#), or go through our webpage [HERE](#).



View Doug Rodger's "An Introduction to Salish Sea Fellowship" video [HERE](#)!

Doug's video is a wonderful resource when folks inquire about our sweet little fellowship. Share it with friends and neighbors!

Attention, Home Chefs!

CUMC also runs a weekly soup kitchen, and Salish Sea provides the soup (a gallon of veggie and a gallon with meat) on the third Saturday of the month. If you would like to join the list of folks who provide soup and/or assist with set-up and clean-up in the future, **please contact Kate Madson at kmadson3of9@gmail.com or Kendra Golden at kendrajgolden@gmail.com**. Thank you so much to Kate and Kendra for their dedication to feeding our neighbors.

Let's challenge ourselves to give back to our community as much as possible in 2026!

